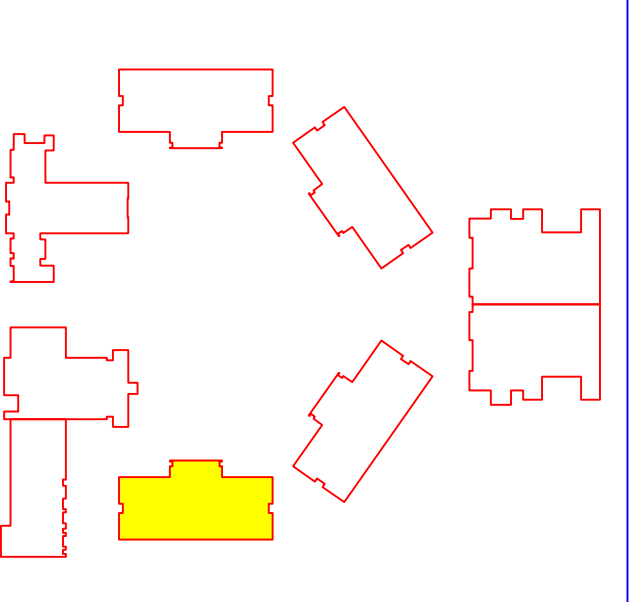


NOTE: DO NOT DIMENSION SHALL HAVE ONE HUNDREDTHS (0.01) INCHES ROUNDED UP AND 1/8" OF THEM FOR WORK SIZES.
 HATCHING MATERIALS SYMBOL WITH LINES IN ONE DIRECTION SHALL BE USED IN ONE DIRECTION ONLY.

BUILDING C: FIRST FLOOR PLAN

SCALE: 1/8"=1'-0"

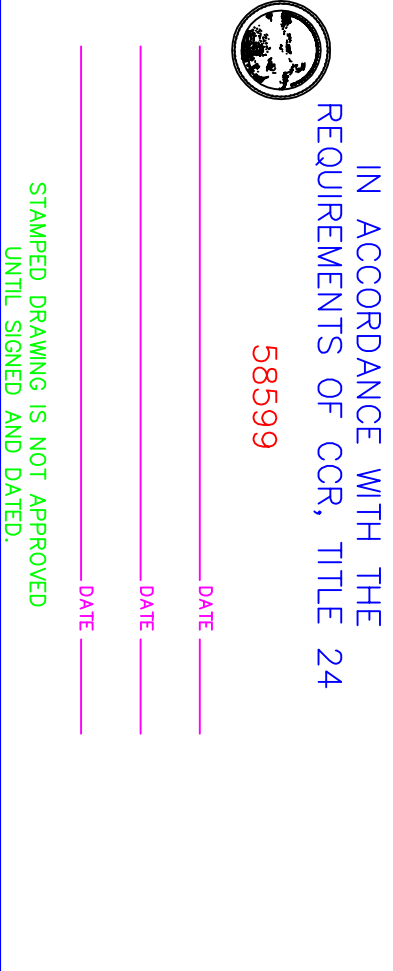
KEY PLAN



WALL LEGEND

| SYMBOLS LEGEND/ABBREVIATIONS | |
|------------------------------|---------------------------------|
| Window Mark | FI - GLAZED |
| Key Note Mark | F2 - WALL CONSTRUCTION TYP. |
| Door Mark | F4 - QUANTITY TYP. |
| | F5 - REVISION TO CONSTRUCTION |
| | F6 - REVISION TO CONSTRUCTION |
| | F7 - REVISION TO CONSTRUCTION |
| | F8 - REVISION TO CONSTRUCTION |
| | F9 - REVISION TO CONSTRUCTION |
| | F10 - REVISION TO CONSTRUCTION |
| | F11 - REVISION TO CONSTRUCTION |
| | F12 - REVISION TO CONSTRUCTION |
| | F13 - REVISION TO CONSTRUCTION |
| | F14 - REVISION TO CONSTRUCTION |
| | F15 - REVISION TO CONSTRUCTION |
| | F16 - REVISION TO CONSTRUCTION |
| | F17 - REVISION TO CONSTRUCTION |
| | F18 - REVISION TO CONSTRUCTION |
| | F19 - REVISION TO CONSTRUCTION |
| | F20 - REVISION TO CONSTRUCTION |
| | F21 - REVISION TO CONSTRUCTION |
| | F22 - REVISION TO CONSTRUCTION |
| | F23 - REVISION TO CONSTRUCTION |
| | F24 - REVISION TO CONSTRUCTION |
| | F25 - REVISION TO CONSTRUCTION |
| | F26 - REVISION TO CONSTRUCTION |
| | F27 - REVISION TO CONSTRUCTION |
| | F28 - REVISION TO CONSTRUCTION |
| | F29 - REVISION TO CONSTRUCTION |
| | F30 - REVISION TO CONSTRUCTION |
| | F31 - REVISION TO CONSTRUCTION |
| | F32 - REVISION TO CONSTRUCTION |
| | F33 - REVISION TO CONSTRUCTION |
| | F34 - REVISION TO CONSTRUCTION |
| | F35 - REVISION TO CONSTRUCTION |
| | F36 - REVISION TO CONSTRUCTION |
| | F37 - REVISION TO CONSTRUCTION |
| | F38 - REVISION TO CONSTRUCTION |
| | F39 - REVISION TO CONSTRUCTION |
| | F40 - REVISION TO CONSTRUCTION |
| | F41 - REVISION TO CONSTRUCTION |
| | F42 - REVISION TO CONSTRUCTION |
| | F43 - REVISION TO CONSTRUCTION |
| | F44 - REVISION TO CONSTRUCTION |
| | F45 - REVISION TO CONSTRUCTION |
| | F46 - REVISION TO CONSTRUCTION |
| | F47 - REVISION TO CONSTRUCTION |
| | F48 - REVISION TO CONSTRUCTION |
| | F49 - REVISION TO CONSTRUCTION |
| | F50 - REVISION TO CONSTRUCTION |
| | F51 - REVISION TO CONSTRUCTION |
| | F52 - REVISION TO CONSTRUCTION |
| | F53 - REVISION TO CONSTRUCTION |
| | F54 - REVISION TO CONSTRUCTION |
| | F55 - REVISION TO CONSTRUCTION |
| | F56 - REVISION TO CONSTRUCTION |
| | F57 - REVISION TO CONSTRUCTION |
| | F58 - REVISION TO CONSTRUCTION |
| | F59 - REVISION TO CONSTRUCTION |
| | F60 - REVISION TO CONSTRUCTION |
| | F61 - REVISION TO CONSTRUCTION |
| | F62 - REVISION TO CONSTRUCTION |
| | F63 - REVISION TO CONSTRUCTION |
| | F64 - REVISION TO CONSTRUCTION |
| | F65 - REVISION TO CONSTRUCTION |
| | F66 - REVISION TO CONSTRUCTION |
| | F67 - REVISION TO CONSTRUCTION |
| | F68 - REVISION TO CONSTRUCTION |
| | F69 - REVISION TO CONSTRUCTION |
| | F70 - REVISION TO CONSTRUCTION |
| | F71 - REVISION TO CONSTRUCTION |
| | F72 - REVISION TO CONSTRUCTION |
| | F73 - REVISION TO CONSTRUCTION |
| | F74 - REVISION TO CONSTRUCTION |
| | F75 - REVISION TO CONSTRUCTION |
| | F76 - REVISION TO CONSTRUCTION |
| | F77 - REVISION TO CONSTRUCTION |
| | F78 - REVISION TO CONSTRUCTION |
| | F79 - REVISION TO CONSTRUCTION |
| | F80 - REVISION TO CONSTRUCTION |
| | F81 - REVISION TO CONSTRUCTION |
| | F82 - REVISION TO CONSTRUCTION |
| | F83 - REVISION TO CONSTRUCTION |
| | F84 - REVISION TO CONSTRUCTION |
| | F85 - REVISION TO CONSTRUCTION |
| | F86 - REVISION TO CONSTRUCTION |
| | F87 - REVISION TO CONSTRUCTION |
| | F88 - REVISION TO CONSTRUCTION |
| | F89 - REVISION TO CONSTRUCTION |
| | F90 - REVISION TO CONSTRUCTION |
| | F91 - REVISION TO CONSTRUCTION |
| | F92 - REVISION TO CONSTRUCTION |
| | F93 - REVISION TO CONSTRUCTION |
| | F94 - REVISION TO CONSTRUCTION |
| | F95 - REVISION TO CONSTRUCTION |
| | F96 - REVISION TO CONSTRUCTION |
| | F97 - REVISION TO CONSTRUCTION |
| | F98 - REVISION TO CONSTRUCTION |
| | F99 - REVISION TO CONSTRUCTION |
| | F100 - REVISION TO CONSTRUCTION |

THIS DOCUMENT HAS BEEN REVIEWED IN ACCORDANCE WITH THE REQUIREMENTS OF CCR, TITLE 24 596999



SOUTH CORONA HIGH SCHOOL

CORONA-NORCO UNIFIED SCHOOL DISTRICT

Woff/Lang/Christopher Architects, Incorporated

Virginia Dare Tower 10470 Foothill Blvd. Rancho Cucamonga CA 91730 (714)987-5909

| | | | |
|-----------------------------------|------|------|------|
| | | | |
| BUILDING C FIRST FLOOR PLAN | A4.1 | A4.1 | A4.1 |